

# WDRReportGen



Looking for a powerful and flexible reporting tool that's easy to use, cost effective and extract data from any database? Microsoft Office is your choice. With the help of WDRReportGen, Microsoft Word is a powerful and flexible reporting tool.

WDRReportGen is a report generator for Microsoft Word that outputs reports in Microsoft Word document format. If you know how to use Microsoft Word and write SQL statements, you can use WDRReportGen to create all kinds of reports as you need.

## Benefit

- Use Microsoft Word as your reporting tool

You have installed Microsoft Office in your computer, and you almost use Microsoft Office every day. You are familiar with Microsoft Word, and already know how to use it. Use Microsoft Word as reporting tool, it is very convenient.

- Easy to use

You already know how to use Microsoft Word. It is easy. Get data using SQL. It is simple. You can create reports without programming experience. Easy to learn, use and maintain.

- Powerful and flexible

WDRReportGen is powerful and flexible because Microsoft Word and SQL are powerful and flexible. You can create extremely complex reports.

- Saves money

You do not need to buy extra costly reporting tools. No training is necessary because everyone uses Microsoft Office.

- Saves time

Reduce development time and training time.

- Improves productivity

More productive when reports are in familiar formats like Microsoft Word.

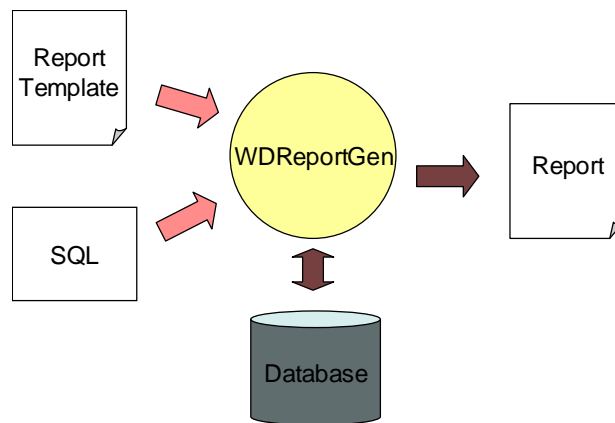
- For various users

For IT users, you know Microsoft Word and SQL, it is enough. No programming is required. For business users, you can create report templates using Microsoft Word. WDRReportGen enables you to design reports like defining the layout, style, format of reports. For developers, WDRReportGen can be called by your program. It enables you to integrate Microsoft Word into your application.

## Overview

WDRReportGen is a report generator for Microsoft Word that outputs reports in Microsoft Word document format. If you know how to use Microsoft Word and write SQL statements, you can use WDRReportGen to create all kinds of reports as you need.

To create a report, WDRReportGen need to read a report template file and a WRF file. The report template file is a Microsoft Word document that defines the layouts and formats of a report. The WRF file



contains SQL statements and some information, and tells WDRReportGen how to get data from database and how to put data into a report. First WDRReportGen creates a blank report using the report template file, executes SQL statements in the WRF file, and puts the data from database into the report.

## Feature

WDRReportGen includes the following features:

- Using Microsoft Word as your reporting tool

Just use Microsoft Word as your reporting tool. You design reports like layouts, formats and styles directly using Microsoft Word. And you will get reports in Microsoft Word document format as a result. Microsoft Word is powerful, flexible and familiar. You do not need to buy and learn extra reporting tools.

- Making report template directly using Microsoft Word

The main advantage of using WDRReportGen is based on the fact that all formatting is done directly in Microsoft Word. You can take advantage of Microsoft Word including text formatting, tables, pictures and graphics, drawing, chart, page setup, headers and footers, and more.

- Manipulating Word reports with OpenXML SDK

Open XML is an open file format for the core document-oriented Office applications. It facilitates document creation and manipulation in server environments where you do not need to install the Office client applications.

- Accessing to data using SQL

WDRReportGen executes SQL statements to extract data from database. Supports all type SQL: DML, DDL and DCL. Multiple SQL statements can be executed in one report building process. You can perform queries on databases, insert data into databases, and create database objects like tables. The power of SQL can be harnessed for maximum efficiency in reporting.

- Creating reports without programming experience

You know how to use Microsoft Word and how to write SQL, it is enough. It does not require programming to create reports.

- Connection to databases using ADO.Net

Using ADO.NET to connect to databases, WDRReportGen is independent of database systems. It can access to almost all of databases such as Oracle, DB2, Sybase, Informix, Microsoft SQL Server, Teradata, MySQL, Microsoft

Access and dBase through OLE DB and ODBC.

- Supporting multi-databases in one report

WDRReportGen supports multi-databases in one report. You can get data from some different databases such as Oracle, DB2 and Microsoft SQL Server, and put these data into one report.

- Generating reports with parameters

WDRReportGen enables you to create reports with parameters. You may use parameters in SQL statements. You will be asked to input the values of parameters while creating reports.

- Supporting Windows mode and command line mode

WDRReportGen supports command line mode. So it is possible to call WDRReportGen from other program. For developers, you can integrate WDRReportGen into your application.

- Creating complex reports

You can create complex reports. The complexity might come from report formatting as well as report content.

- Creating reports with charts

WDRReportGen enables you to include sophisticated, colorful charts in your reports. You can use charts any time you want to improve the usefulness of a report.

- Creating reports with pictures

WDRReportGen can insert pictures from the graphics files, and set the inserted way, text wrapping style and size of the pictures according to your instruction.

- Many reports in one Microsoft Word document

One Microsoft Word document may contain many reports. You can generate a book of reports in one generating process.

- Generating reports automatically

The process of report generation can be fully automated, periodically or on events. WDRReportGen can be scheduled with Windows Scheduled Tasks or other tools.

- One time configuration

With on time configuration, you can repeatedly generate reports especially periodic reports such as daily, weekly, monthly and annual reports.

- Flexible deployment

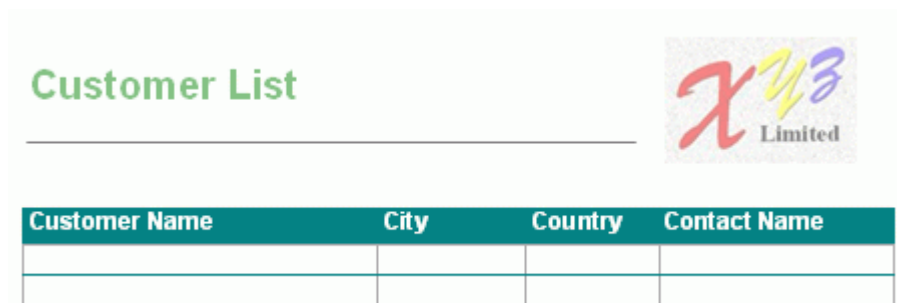
WDRReportGen can be run on your desktop or server.

## Reporting steps

WDRReportGen is simple and easy to use. It does not require programming to create reports. It is enough if you know how to use Microsoft Word and write SQL statements. Developing a report with WDRReportGen requires only three steps:

**Step 1.** Create a report template file using Microsoft Word, define the layouts, styles, formats of reports.

For example, to create a Customer List report, you make a report template as follows.



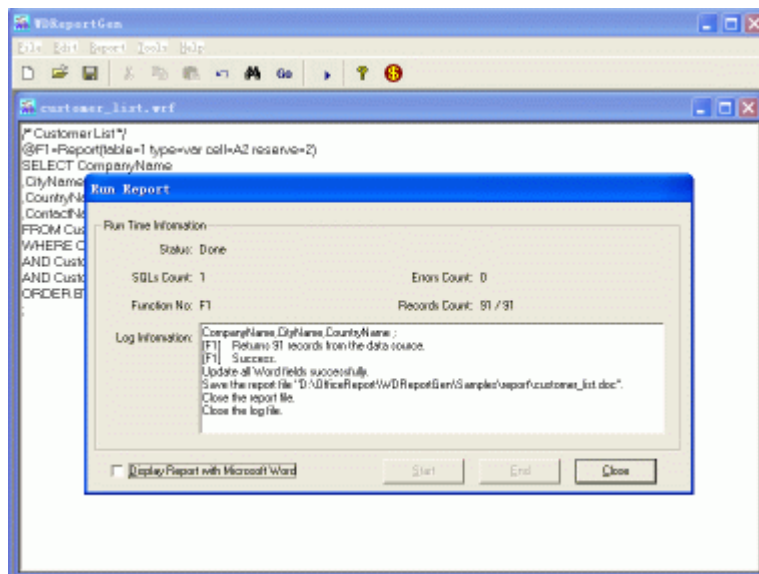
**Step 2.** Create a WRF file with a .wrf extension using WDRReportGen. The WRF file tell WDRReportGen how to extract data from database, and where and how to put data.

For example, you create a WRF file, and write a report function and SQL as follows.

```
/* Customer List */  
  
@F1=Report(table=1 type=var cell=A2 rangecount=2)  
  
SELECT CompanyName
```

```
,CityName
,CountryName
,ContactName
FROM Customers, Cities, Countries
WHERE Customers.CityCode = Cities.CityCode
AND Customers.CountryCode = Cities.CountryCode
AND Customers.CountryCode = Countries.CountryCode
ORDER BY CompanyName, CityName, CountryName
;
```

**Step 3.** Run WDRptGen to generate a report in Microsoft Word document.



The report Customer List is generated as follows.

## Customer List



Customer Name	City	Country	Contact Name
Alfreds Futterkiste	Berlin	Germany	Maia Anders
Ana Trujillo Emparedados y helados	México D.F.	Mexico	Ana Trujillo
Antonio Moreno Taquería	México D.F.	Mexico	Antonio Moreno
Around the Horn	London	UK	Thomas Hardy
Berglunds snabbköp	Luleå	Sweden	Christina Berglund
Blauer See Delikatessen	Mannheim	Germany	Hanna Moos
Blondel père et fils	Strasbourg	France	Frédérique Citeaux
Bólido Comidas preparadas	Madrid	Spain	Martin Sommer
Bon app'	Marseille	France	Laurence Lebihan
Bottom-Dollar Markets	Tsawassen	Canada	Elizabeth Lincoln
B's Beverages	London	UK	Victoria Ashworth
Cactus Comidas para llevar	Buenos Aires	Argentina	Patricio Simpson

## System requirement

Supported Operating System:

- Microsoft Windows XP, Windows Server 2003, Windows Vista, Windows Server 2008, Windows 7 or later.

This software requires the following:

- Microsoft .NET Framework 4.
- Open XML SDK 2.5 for Microsoft Office.

WDRReportGen Copyright © 2014 LJZsoft Corporation. All Rights Reserved.

Contact/Support

Email: [feedback@ljzsoft.com](mailto:feedback@ljzsoft.com)

[sales@ljzsoft.com](mailto:sales@ljzsoft.com)

[support@ljzsoft.com](mailto:support@ljzsoft.com)

WWW: <http://www.ljzsoft.com>